

Measuring Relative Elongation

Contacting Displacement Sensor GDG 87



Advantages

- Rugged design
- Meets API 670 and DIN 45670 requirements

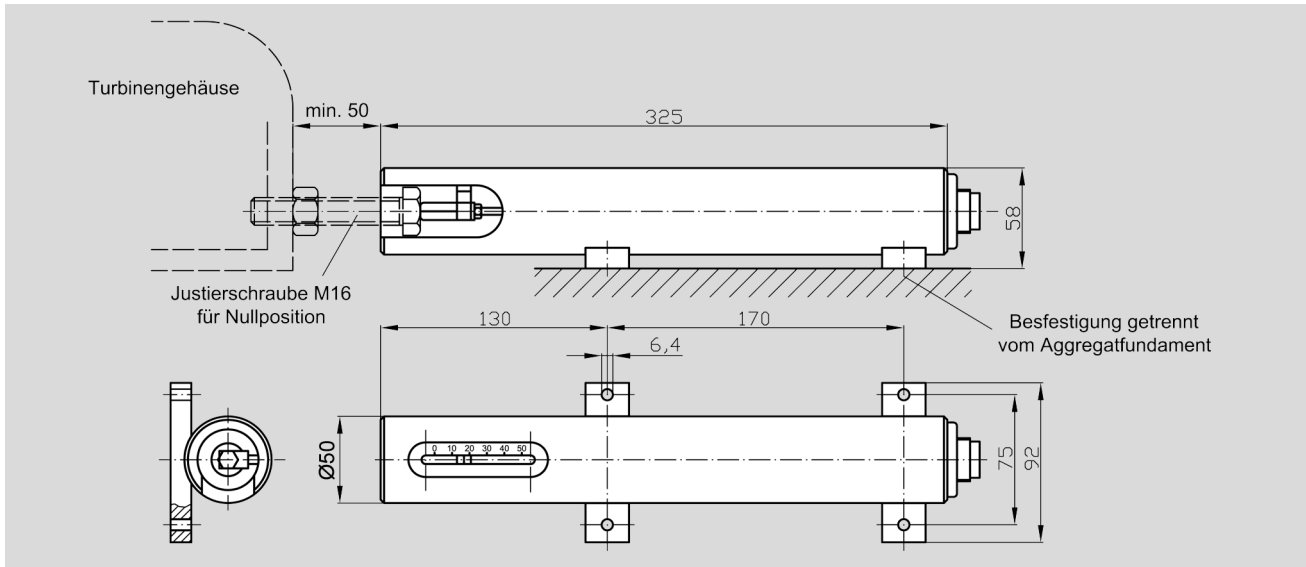
Applications

- Measurement of housing elongations
- Connection to monitoring devices

Description

For measurement of thermal expansion of machine housings, the sensor base is fitted to the machine foundation. The adaptable sensor rod is mounted to the item to be measured.

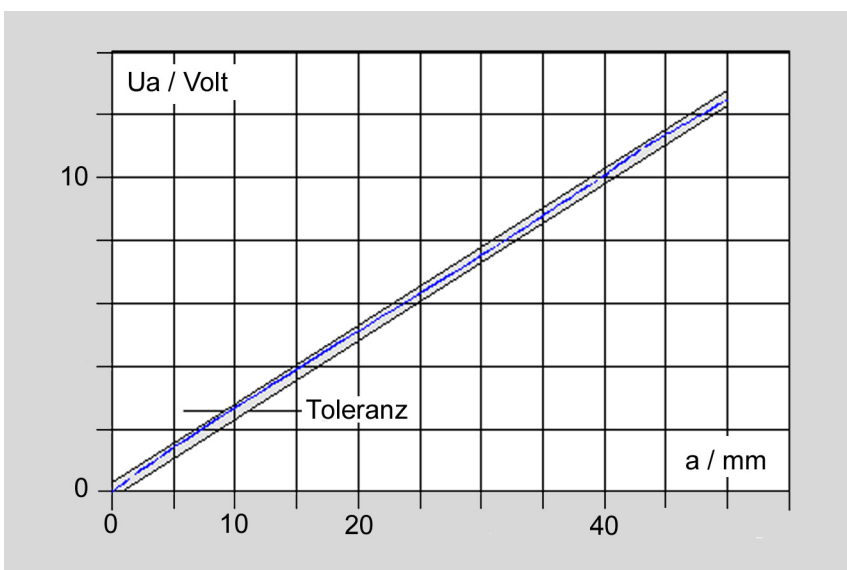
The sensor supplies an output voltage proportionate to the displacement of the sensor rod. Power is supplied by the attached monitoring or evaluation instruments.



Dimensions and mounting schematic for GDG 87

Technical data

Sensor diameter	58 mm
Sensor material	Steel
Plug	Tuchel
Linear range	50 mm
Voltage sensitivity	250 mV/mm
Operating temperature	-20 to +70 °C
Power supply	by monitoring device



Typical response curve of GDG 87, tolerance $\pm 2\%$ of measuring range (± 1 mm)

Scope of supply

- Sensor GDG 87

Options

- Protective hoses
- Connector box for permanent wiring

All information without obligation, subject to change without notice!